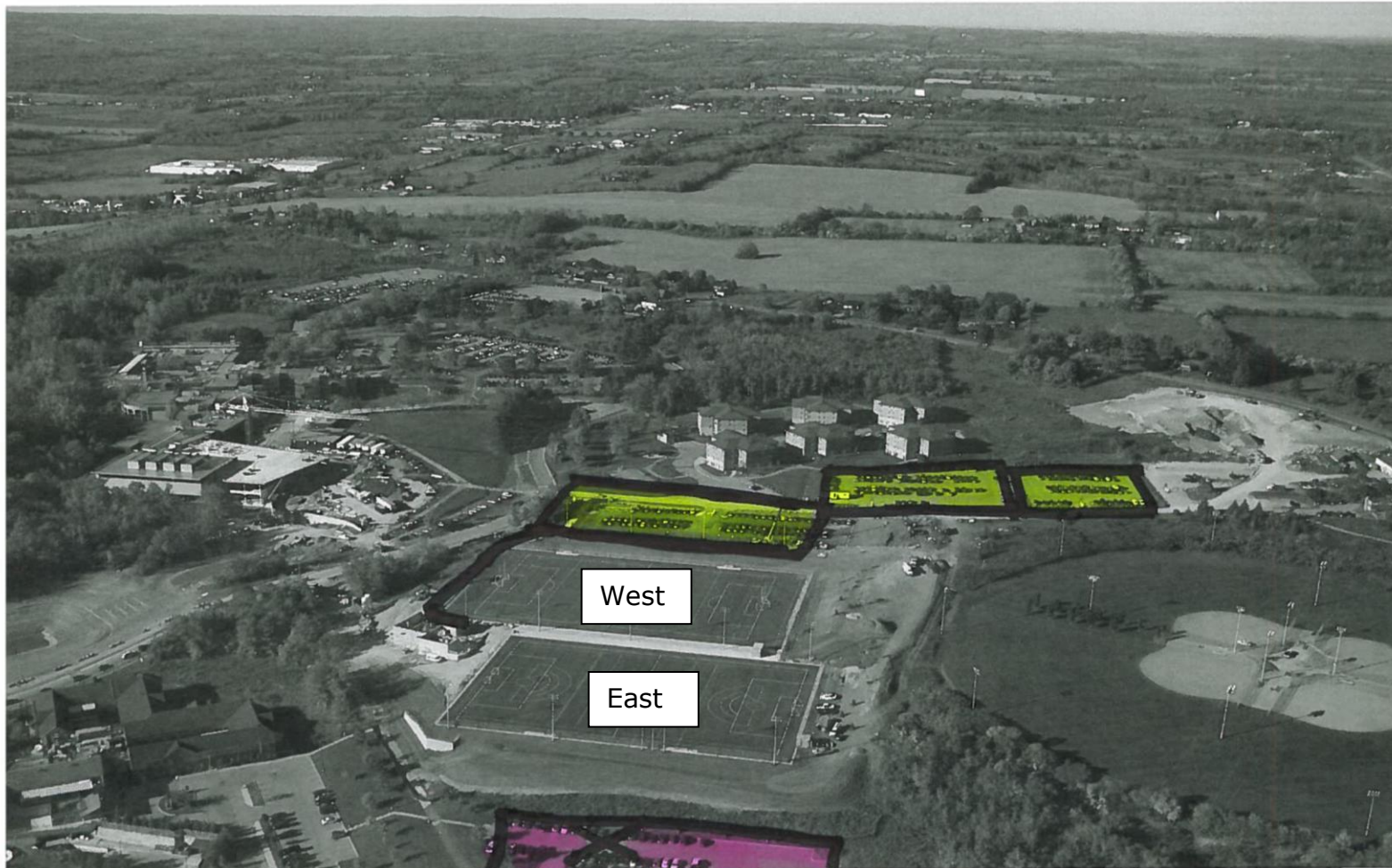


Sir Sandford Fleming Fields

From Brealey Drive, the entrance for Fleming fields will be at the same 4 way stop that the College students use. Once you drive up the driveway, past St. Joseph's at Fleming and past the new field house, you will turn right. Parking lots are indicated by yellow and will be available for the sports users after 5 pm during weeknights and all day on weekends at no charge.

Make sure that your users do NOT use the St. Joseph's at Fleming entrance or parking lot at the bottom of the diagram. We do not have access to this and it is private property. There also is no access to the fields from the south side. This parking lot is coloured pink with the X through it.

Access to the fields is along the thick black line on the diagram and between the two fields. Both light boxes are placed at this end of the fields as well.



599 Brealey Drive Peterborough, Ontario K9J 7B1